

Health & Social Care Transition Project



You are about to transition to either Level 2 or level 3 Health and Social Care at Shrewsbury Colleges Group.

This transition project seeks to prepare you for the key skills and knowledge needed for this course.

Please email completed documents to **Leah** by Friday 18th Aug 2023.

If you have any questions, please email:

Leah Marshall leahg@shrewsbury.ac.uk

Getting to know your course

Studying Level 3 Health and Social Care

Entry requirements

5 GCSE at grade 4 or above including maths and English.

Course content

You will complete 13 units over the two years, four of these will be external assessment (exams), one will be a work placement portfolio and the remaining units will be internally assessed mainly through essay style assignments.

Year 1 units

Unit 1- Human Lifespan Development (Exam in January)

Unit 2- Working in Health & Social Care (Exam in May)

Unit 5- Meeting Individual Needs

Unit 6- Work Placement (Portfolio)

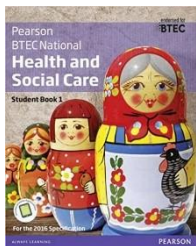
Unit 7- Principles of Safe Practice in Health & Social Care

Unit 10- Sociological Perspectives

Unit 12- Supporting Individuals with Additional Needs

Text Book

There is a course text book which you can purchase, we recommend that you do if you can as resources in our LRC at College are limited. The book is available as an ebook though so you will have access to it if you choose not to purchase one. This is the book and link to buy.



[Text Wrapping Break]

https://www.amazon.co.uk/BTEC-National-Health-Social-Student/dp/1292126019/ref=asc_df_1292126019/?tag=bingshoppinga-21&linkCode=df0&hvadid=&hvpos=&hvnetw=o&hvrnd=&hvpone=&hvptwo=&hvqmt=e&hvdev=c&hvdvcmdl=&hvlocint=&hvlocphy=&hvtargid=pla-4583451664047442&psc=1

Work Placement

We are unsure what impact Covid-19 will have on work placement at this time. We are hoping to get you into placement as soon as it is safe to do so. You will be doing 100 hours of placement per year in 2 weekly blocks. You must be available 5 days a week for those 2 weeks to meet requirements. We will give you plenty of notice once we know when these dates will be so you can ensure that you are available to attend. The majority of your placement will be in a residential care home so please start thinking about where you would like to go, ideally close to where you live. We have a work placement coordinator who will work with you to source these placements. You will be required to have a DBS check (more information will be provided later on) and a work placement uniform (this is available to purchase in September.)

Studying Level 2 Health and Social Care

You will complete 12 units over one year, two of these will be external assessment (exams), and the remaining units will be internally assessed mainly through essay style assignments.

Year 1 units

Unit 1- Human Lifespan Development (Exam in January)

Unit 2- Health and Social Care Values

Unit 3 - Effective Communication in Health and Social Care

Unit 7- Equality and Diversity in Health and Social Care

Unit 8 - Individual Rights in Health and Social Care

Unit 9 - Healthy Living (Exam in January)

Unit 11 - Services in Health and Social Care

Unit 15 - Carrying out a Research Project in Health and Social Care

Unit 18 - Child Development and Observation

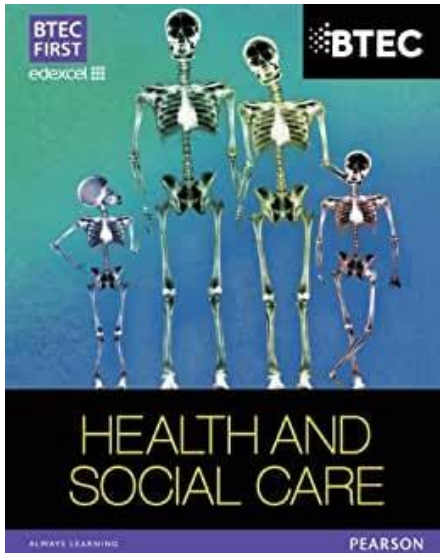
Unit 19 - Skills and Qualities for Working in the Health and Social Care Sector

Unit 21 - Introduction to Dementia

Unit 24 - Infection Control in Health and Social Care

Text Book

There is a course text book which you can purchase, we recommend that you do if you can as resources in our LRC at College are limited. The book is available as an ebook though so you will have access to it if you choose not to purchase one. This is the book and link to buy.



[https://www.amazon.co.uk/BTEC-First-Health-](https://www.amazon.co.uk/BTEC-First-Health-Social-Student/dp/1446901351/ref=sr_1_9?crid=1M2HLU6IMUMH9&dchild=1&keywords=btec+level+2+health+and+social+care+book&qid=1593519778&sprefix=btec+level+2+health%2Caps%2C151&sr=8-9)

[Social-](https://www.amazon.co.uk/BTEC-First-Health-Social-Student/dp/1446901351/ref=sr_1_9?crid=1M2HLU6IMUMH9&dchild=1&keywords=btec+level+2+health+and+social+care+book&qid=1593519778&sprefix=btec+level+2+health%2Caps%2C151&sr=8-9)

[Student/dp/1446901351/ref=sr_1_9?crid=1M2HLU6IMUMH9&dchild=1&keywords=btec+level+2+health+and+social+care+book&qid=1593519778&sprefix=btec+level+2+health%2Caps%2C151&sr=8-9](https://www.amazon.co.uk/BTEC-First-Health-Social-Student/dp/1446901351/ref=sr_1_9?crid=1M2HLU6IMUMH9&dchild=1&keywords=btec+level+2+health+and+social+care+book&qid=1593519778&sprefix=btec+level+2+health%2Caps%2C151&sr=8-9)

Work Placement

We are unsure what impact Covid-19 will have on work placement at this time. We are hoping to get you into placement as soon as it is safe to do so. If possible, you will undertake 30 hours of placement in a one week block. We will give you plenty of notice once we know when these dates will be so you can ensure that you are available to attend. We have a variety of work placement opportunities in; care homes, schools, SEN schools and day centers. Please start thinking about where you would like to go. We have a work placement coordinator who will work with you to source these placements. You will be required to have a DBS check (more information will be provided later on) and a work placement uniform (this is available to purchase in September.)

Class Grouping

When you join us in September we group you into your study groups for the duration of your course. When grouping you we like to ensure you are with friends and we try to accommodate any personal commitments where possible. We would like to highlight that we are unable to guarantee your requests however, we will do our utmost to accommodate if possible. Please fill in boxes below to help us with this task.

Your Name	
Area of Residence	
GCSE Maths Grade (predicted)	
GCSE English Grade (Predicted)	
Friends you would like to be grouped with (they must be studying the same level course as you)	
Part- Time work Commitments	
Any other comments	

NETFLIX

Babies



Heal (USA)



Louis Theroux:
Extreme love,
Dementia



Five Feet Apart



Brain on Fire



Theory of
Everything



Humans;
Body Systems



Three identical
strangers



Girl, interrupted



Call the Midwife



13 Reasons Why



The Game
Changer (2018)



Beyond NETFLIX

BBC iPlayer

Elizabeth is Missing



Katie Price;
Harvey and Me



Jesy Nelson:
Odd one out



Stacey Dooley
9-5 Care Home



All 4

24 hours in
A&E



Born to be
different



The Royal
Marsden

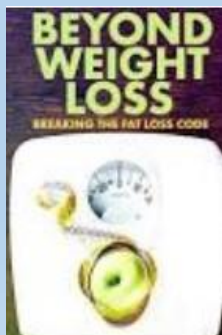


Losing it: Our
mental health



Amazon Prime

Beyond weight
loss



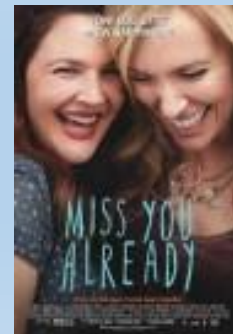
The Upside



ALLELUJAH



Miss you
Already



Beyond NETFLIX



Follow



Follow

@midwifemama



@beautifulnursing



@lelaincredible



@dr.karanr



@instituteofhuman
anatomy



@lubdubsblog



@nhsuk



@alliedhealthcareforme



Instagram

Nurses.co.uk

@nursezara_uk



If you have any others, you think are good, let us know 😊

Health and Social Care in the Media



It is important to have **broad understanding** of health care and social issues which affect services and professionals working for the NHS. One way of raising your awareness is to **prepare you before your course** starts with summer learning using different forms of media.

Your task is to pick either a film, a book or documentary from the pages above.

You are then tasked with writing a report which is to be a minimum of half an A4 page with the following title: **'Discuss the issues [in the film/book or documentary] and impact on health care provision'**

You must watch or read using examples on the previous slides or another media resource relevant to your learning.

Consider the following:

- What issues, if any, are being raised in the stimulus? E.g. dementia
- How does the stimulus present health? E.g. care for people with dementia
- Explain why the topic of the media source is relevant to your learning and whether you think it is helpful and why?

This list is NOT exhaustive there may be other questions/ideas you wish to consider as you watch or read– it would be lovely to share with us all.



Barbara, the whole story



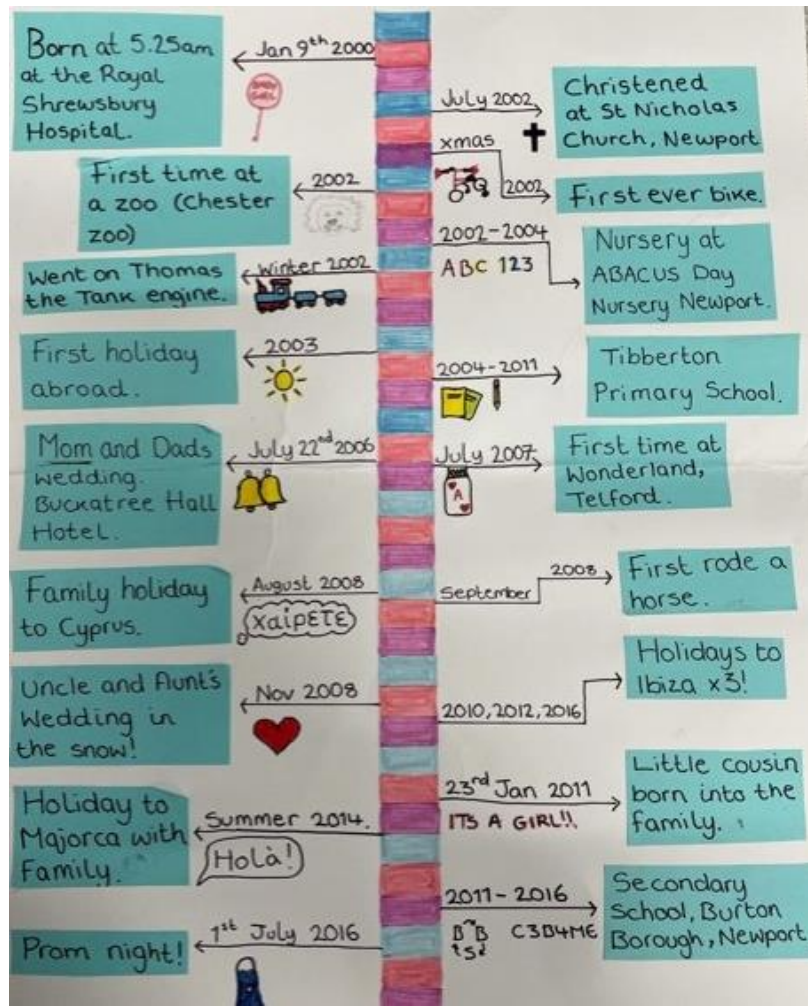
BBC Mental A History of the Madhouse FULL DOCUMENTARY



What is it Like Being A Male Nurse | Student Nurses | Real Families

Task 1 (Human Lifespan Development)

A key aim of our college is to be student focused. The best way for us to support you is to get to know you. Complete a time line of events within your life from birth to now. What exciting and interesting things have you done that got you here with us today. You can be as creative as you want, we have seen trains, flowers, 3D, it really is your choice. Here is an example.



We look forward to
seeing you in September!